

COLOURtube

Colour Coded Conduit Systems



Simple Efficiency

www.colourtube.co.uk

Colourtube. Simple efficiency.

Traditional installations typically make use of single colour conduit across an entire project, making identification of cable routes difficult once walls are closed in.

Colourtube provides a simple solution to this problem by allowing electrical services to be identified by a standardised colour coded system.

Available in a variety of PVC colour options, **Colourtube** offers the ability to match services shown on construction documents to their corresponding colour coded conduit.

This simple yet effective solution provides an increase in site productivity and a safe working practice to ensure all services are installed correctly first time.



Safe Working

Promotes a safer working environment with trade to trade handover rather than multiple trades working in the same area.



Clear Identification

Easy identification once walls are at 2nd fix (white box) stage. Reducing remedial work and increasing efficiency.



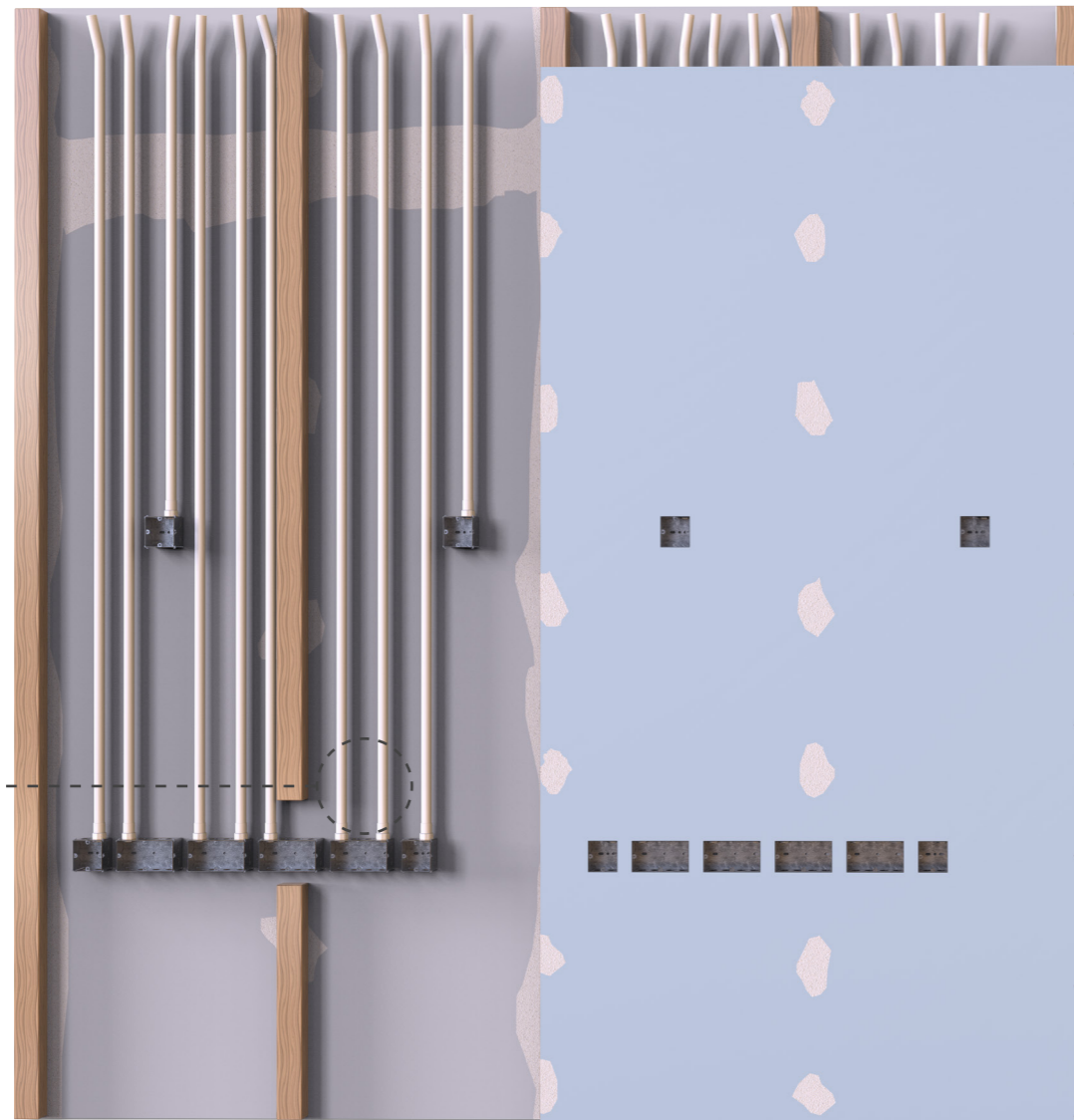
Better Programme

Main walls taken from 1st fix to 'white box' before being handed back for multiple trade wiring services.

Typical example of traditional services identification

- Control Systems
- BT/Comms/IT
- Security Systems
- Data
- Fire Alarm Systems
- Audio Systems
- Lighting
- Power
- BMS Systems

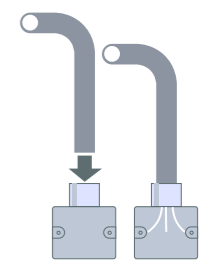
All outlets traditionally routed using black or white PVC conduit.



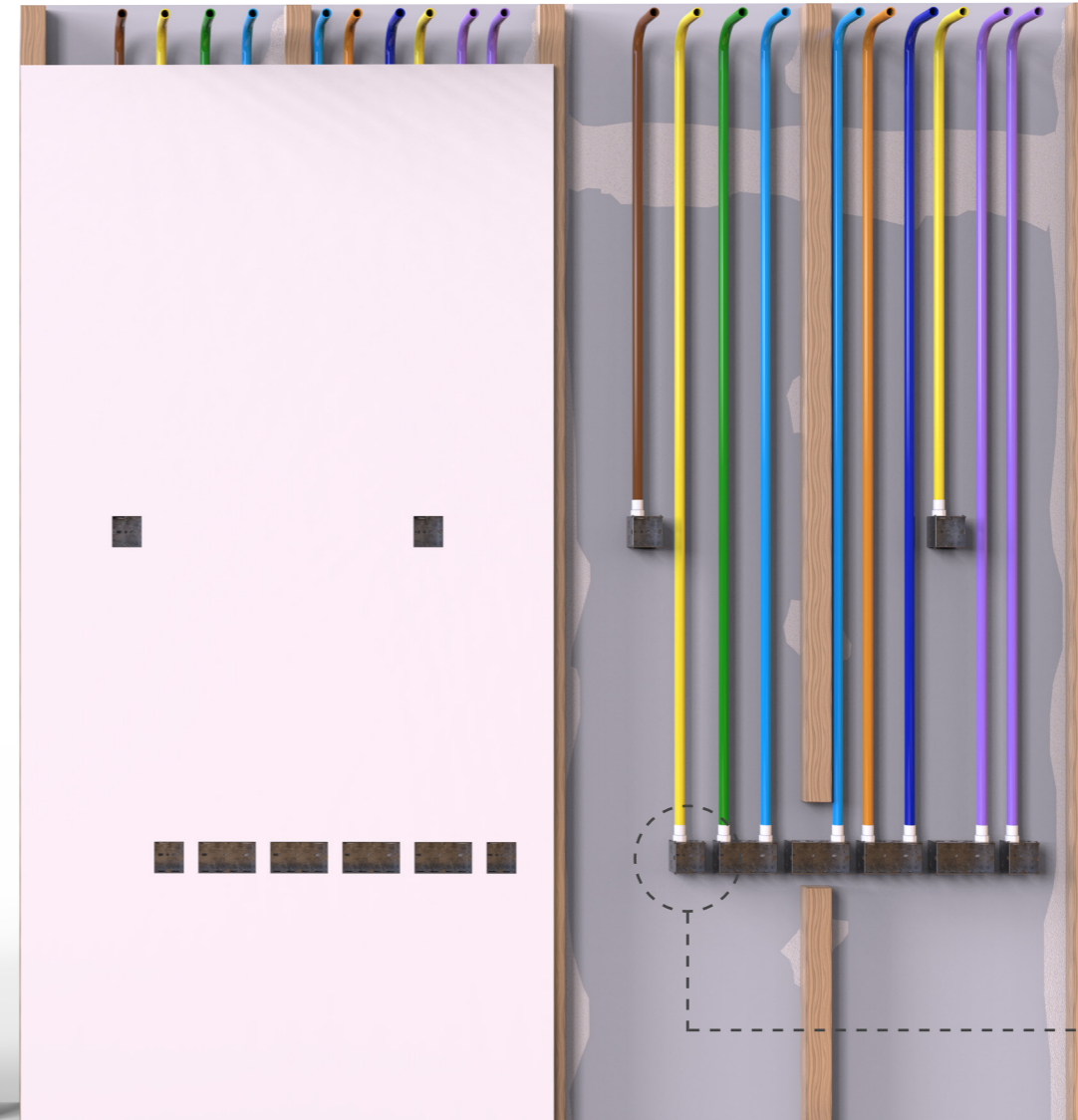
Typical example of Colourtube services identification

- Control Systems*
- BT/Comms/IT*
- Security Systems*
- Data*
- Fire Alarm Systems*
- Audio Systems*
- Lighting*
- Power*
- BMS Systems*

* Services designation shown is for illustration only



Each kit includes a single Colourtube 'hockey stick' and a single or double back box as standard



Traditional containment installation

Typical Colourtube installation

COLOURtube

Colour Coded Conduit Systems

Colourtube Range



- Control Systems*
- BT/Comms/IT*
- Security Systems*
- Data*
- Fire Alarm Systems*
- Audio Systems*
- Lighting*
- Power*
- BMS Systems*

* Services designation shown is for illustration only.

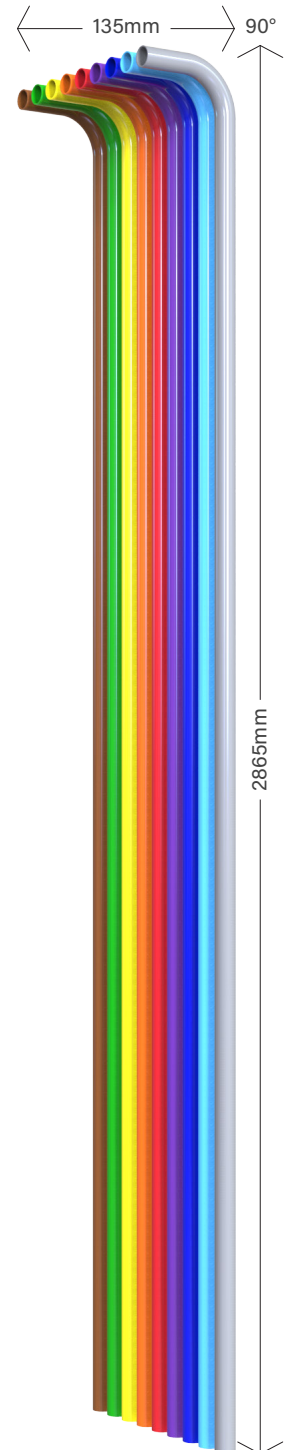
**Available in 20mm diameter upon request.

*** Application standards are:
BS 4662:2006 + A1: 2009
BS EN 60670-1:2005 + A1:2003

Standard Colourtube Kit

Material	PVC
Length	3000mm
Finish	Smooth Gloss
Outside Diameter	25mm**
Bend Radius	135mm
Compliance	RoHS BS4607 BS EN 61386-21: 2004 (BS EN 51386-1: 2008)
Back Box***	1 Gang 35mm (d) (RGB/PG/75/75/35/09)
(1No supplied per Colourtube)	1 Gang 47mm (d) (RGB/PG/75/75/47/09)
	2 Gang 35mm (d) (RGB/PG/75/135/35/09)
	2 Gang 47mm (d) (RGB/PG/75/135/47/09)

Dimensions



Bespoke cutting and fabrication service available on request



Fabricated

Cut to specified lengths



Batched

Deliveries grouped by area



Tagged

Identified by area

Bespoke cutting and fabrication service is priced on a project specific basis. This is based upon the client providing a complete room data sheet for each relevant area.